

A Touchstone Energy® Cooperative   
P.O. Box 790, 509 E. Carthage, Meade, KS 67864  
620-873-2184 or 800-794-2353  
[www.cmselectric.com](http://www.cmselectric.com)

CMS ELECTRIC COOPERATIVE

# The Enlightener

## CMS Electric Cooperative, Inc.

### Board of Trustees

- Ron Oliver**  
President
- Michael Johnson**  
Vice President
- Linda Tomlinson**  
Secretary-Treasurer
- Wes McKinney**  
Trustee
- Chad McMillin**  
Trustee
- Don Nighswonger**  
Trustee
- Keith Randall**  
Trustee
- R. Gary Warden**  
Trustee

### Lightbulb Winners

Congratulations to this month's lightbulb winners:

- ▶ Rachel Speer
- ▶ Jesse Thomas
- ▶ Michael Chase
- ▶ Bill Cotrell
- ▶ Hiedi Napierala
- ▶ Tim Olson

Contact us today for your free lightbulbs!



### Nondiscrimination

This institution is an equal opportunity provider and employer.

## Celebrating Membership

### October is National Co-op Month

Fall is a busy time, and October is a particularly eventful month with school, community and sports activities in full swing. It's also when all cooperatives celebrate National Co-op Month.

When I say CMS Electric celebrates Co-op Month, it really means we are celebrating you! After all, our co-op wouldn't exist without you, our consumer-members.

Our core business purpose is to serve as your electricity provider, but the larger mission of the co-op is to help make our corner of the world a better place. Concern for Community is one of Seven Cooperative Principles that all co-ops share.

Similar to how our wires run through our service territory, our concern for community flows through all of our

decisions — because being a co-op means being a responsible partner and good neighbor.

CMS Electric works to help our community thrive through initiatives led by our employees and local board that's comprised of neighbors who live right here in our community. Because we're local, we understand our community's unique needs and strive to help meet them.

We're proud to support local youth through our scholarship programs. With your help, we offer assistance to our community's most vulnerable. We partner with and support area foodbanks and other charitable organizations.

*Continued on page 12B ▶*



## Focused on YOU.

**OCTOBER IS NATIONAL CO-OP MONTH**

Electric cooperatives were created to serve their members. Because we're a co-op, we're able to adapt to our community's unique needs. That's the power of co-op membership.



## Information REQUESTED

CMS is currently updating our database and we need your help!

We need the 911 address for each of our consumer-members meter locations. These include houses, cabins, sheds, offices, etc. However, if you have them on an oil well lease, saltwater disposal, field office, water wells, irrigation systems or any other meters we would appreciate those, too.

This information will help us if an emergency situation arises.

Contact CMS Electric at 800-794-2353 to have your 911 information on your meters entered into our database system.

We appreciate your help in gathering this information.

## Celebrating Membership Continued from page 12A ►

The word “cooperative” is close to “cooperation,” meaning people working together toward a common goal — mutually benefitting one another and the larger community. That’s the essence of the cooperative spirit. Our employees and member-elected board members are invested in the community in which they live and serve.

Above all, as a co-op we put our members’ priorities first. As your trusted energy partner, we know that saving energy and money is important to you.

We want to empower you to manage energy use at home. If you haven’t already, I encourage you take a moment and download our app, SmartHub.

**The word “cooperative” is close to “cooperation,” meaning people working together toward a common goal — mutually benefitting one another and the larger community.**

Through the app, you can conveniently monitor and manage your energy use. And we’re of course here to help, so give us a call if you have questions about your energy bills.

CMS Electric is continuously examining ways to operate more efficiently while continuing to provide the highest level of friendly, reliable service you expect and deserve. After all, we’re your local co-op. We were built by the members we serve.

## ENERGY EFFICIENCY Tip of the Month

With winter weather on the way, now is the time to seal drafty windows. If you can see daylight around a window frame or if you can rattle a window, the window likely needs to be sealed. Visit [www.energy.gov/energysaver](http://www.energy.gov/energysaver) to learn how and where to seal air leaks.

**SOURCE: WWW.ENERGY.GOV**



## Dress Up with Care for HALLOWEEN

When dressing your little ones (or yourself), keep these safety tips in mind

- Always wear costumes that are labeled flame resistant.
- Wear bright, reflective costumes or add strips of reflective tape to improve visibility.
- Do not wear decorative (colored) contact lenses unless you have seen an eye care professional.
- Wear makeup and hats rather than costume masks that can obscure or obstruct your vision.
- Test the makeup you plan to use in advance for a possible allergy.

In addition, inspect any plug-in decorations for signs of wear and tear (fraying or bare wires or broken plugs) and replace them if damaged.





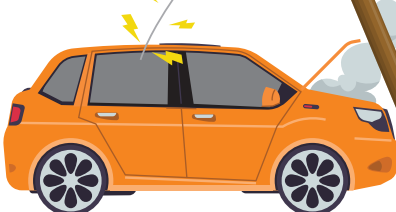
## Encountering a Downed Power Line

Storms, fires, car accidents or animal interference are all examples of events that can damage overhead power lines, pad-mounted transformers (green boxes) or other electrical equipment. While these are not examples of everyday occurrences, it's important to know what to do if you encounter downed power lines.

(Spoiler alert. Do not do any of the following in these scenarios.) If you were in an accident involving a downed overhead power line, would you get out of the car and run? If you saw a car accident involving a downed line or damaged green box, would you run to the scene to help? If you saw a downed line across a road, would you approach it or try to move it?

**ANY OF THESE ACTIONS CAN CAUSE SERIOUS INJURY OR ELECTROCUTION (DEATH).** Downed lines and other damaged equipment can energize the ground, nearby people and objects. Never go

**Do not get out until someone from the utility says it is safe to do so.**



near a downed power line or try to move it with an object. Electricity can jump from a wire or object to you to find the quickest path to ground.

The safest place to be after getting into an accident involving a downed power line is inside your vehicle or cab. Unless your vehicle is on fire or giving off smoke, here is what you should do:

- ▶ Stay inside your vehicle or cab.
- ▶ Call 911 and report there are downed or damaged power lines.
- ▶ Try to remain calm.
- ▶ Wait for the utility crew to arrive to deenergize the power.
- ▶ Do not get out until someone from the utility says it is safe to do so.

If you must get out of the vehicle because it is on fire, cross your arms over your chest and make a clean, solid jump out, then intentionally hop with your feet together as far away as you can. If you are unable to make solid hops, shuffle with your feet close together.

When you exit, do not touch the vehicle and the ground at the same time. You could become electricity's path to ground from touch potential (touching something energized and the ground at the same time).

Hopping helps avoid step potential (placing each foot at a different voltage). When electricity escapes into the ground, it is likened to ripples in a pond, with each ripple representing a different voltage.

## WHEN POWER LINES COME DOWN



Collisions with a pole or pad-mounted transformer can cause the ground and objects to become energized. Always consider a downed line or damaged equipment energized and deadly.

### If you are in a car accident involving a downed line:

- ▶ Stay in the vehicle.
- ▶ Call 911 to report the downed or damaged line.
- ▶ Wait until someone from the electric utility says it is safe to get out.

### If you see a downed or damaged power line or pole or a dislodged electrical cabinet:

- ▶ Do not go near it.
- ▶ Do not touch it.
- ▶ Do not try to move it with another object.
- ▶ Do not touch items that could be energized.
- ▶ Warn others to stay away.





## ENERGY VAMPIRES WORD SCRAMBLE

Energy vampires could be lurking in your home! These are electronic devices that consume energy even when they're not being used.

Unscramble the **bolded** words to identify common energy vampires. Check your work in the answer key below.



When you're finished playing that new video game, unplug your **eagm oncloes**.

---



Tell your parents to unplug the **efcf eo kmrea** when they're finished brewing.

---



When you're done watching your favorite show, unplug the **seotnivile**.

---



If your phone is juiced up, unplug your **nophe rahrgce**.

---

Answer Key: game console, coffee maker, television, phone charger